

site boundary

4no. 1BRP Flats @16-51sqm

4no. 2BRP Houses @176sqm

7no. 3BRP Houses @85sqm

Total: 15no. units
Site Area: 0.404Ha
37 Units per Hectare

road

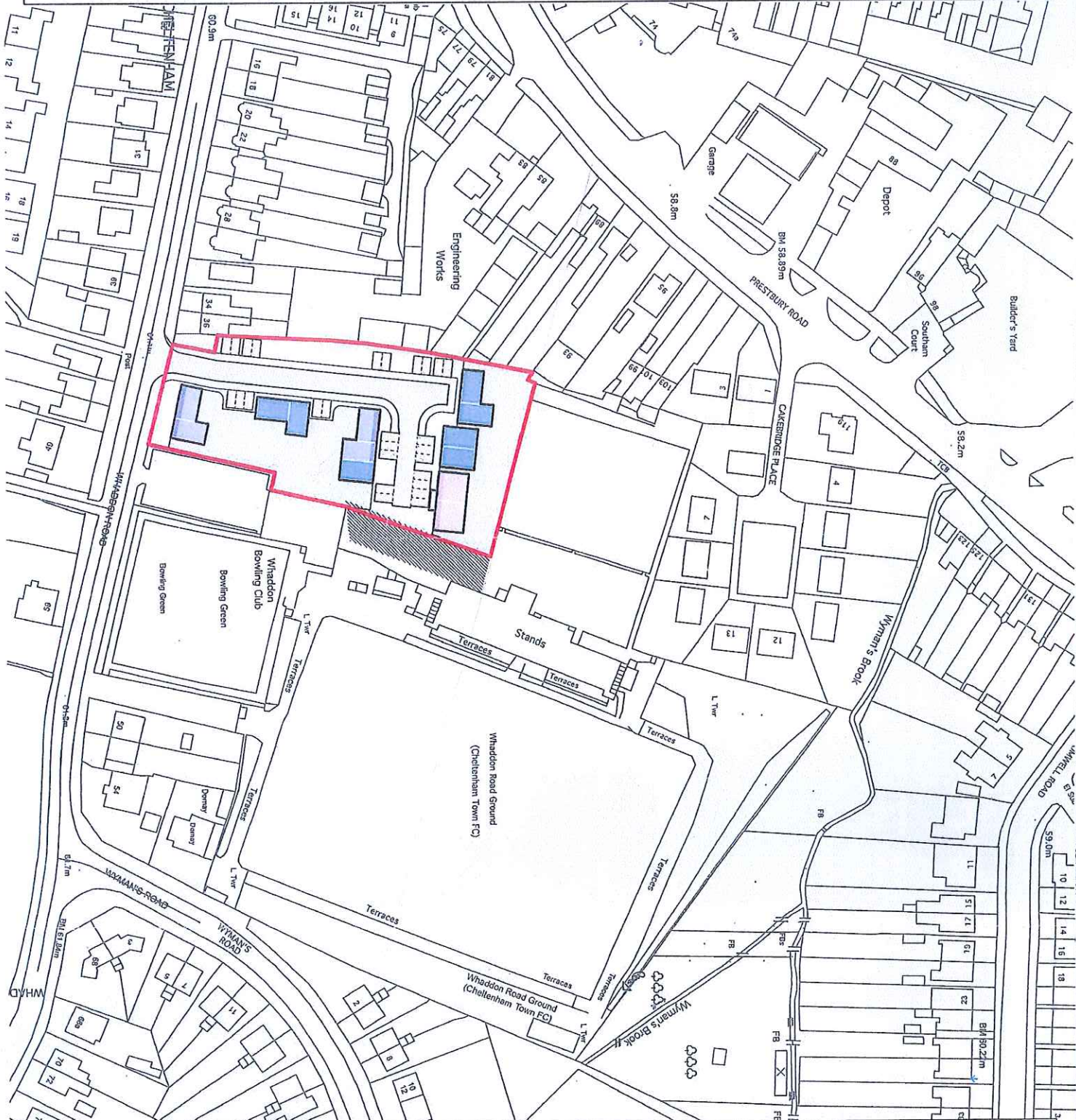
parking space

rear gardens

previous flood area

land to be taken by football club

PLAN B



11 10 9
12 11 10
14 13 12
15 14 13
18 17 16
19 18 17
20 19 18
21 20 19
22 21 20
23 22 21
24 23 22
25 24 23
26 25 24
27 26 25
28 27 26
29 28 27
30 29 28
31 30 29
32 31 30
33 32 31
34 33 32
35 34 33
36 35 34
37 36 35



REVISIONS
As 08/02/2014 - Security amended
As 11/02/2014 - Security amended
Key amended accordingly. SH

PROJEC T
Cakeridge Place
CLIE NT
Cheltenham Borough
Homes

TITL E
Proposed Layout
Option 3

DRAWN CHECKED
SH RLF
SCALE O A R B
1:1000 @ A3
Jan 2014



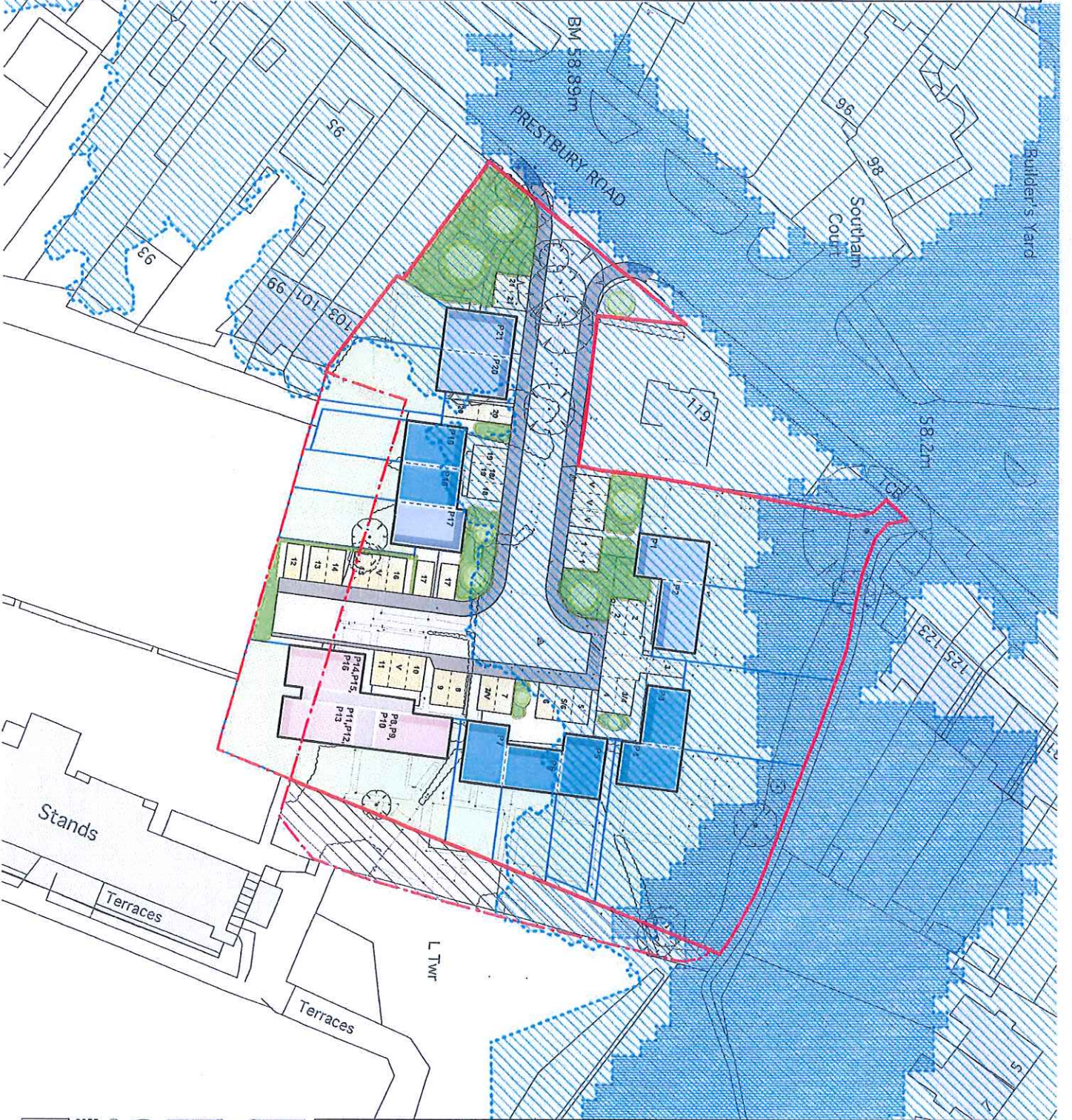
Quattro
designarchitects

DRAWING NO
3012/F/2012
REV
A

key

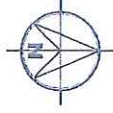
- site boundary
- - - land to be considered
- ▨ land to be taken by football club
- 5no. 1B2P Flats @47sqm
- 7no. 2B4P Houses @77sqm
- 5no. 3B8SP Houses @90sqm
- Total: 21no. units 39 Units per Hectare
- road
- footpath
- parking space
- shared surface
- rear gardens
- existing building
- Environment Agency Flood Areas
- Flood Zone 2
- Flood Zone 3

PLAN A.



N O T E S

The drawings are to be prepared and checked in accordance with the standards set out in the British Standard BS 1192:2011. The drawings are to be prepared and checked in accordance with the standards set out in the British Standard BS 1192:2011. The drawings are to be prepared and checked in accordance with the standards set out in the British Standard BS 1192:2011.



P R O J E C T
Cambridge Place,
Cheltenham

C H E L T E N H A M
Cheltenham Borough
Homes

T I T L E
Proposed Layout
Option 2

D R A W N DC
C H E C K E D SH
S C A L E 1:500 @ A3
D A T E May 2015

Quattro
 designarchitects

17 PRINCE STREET
 CHICHESTER
 WEST SUSSEX PO19 1SE
 01243 822222
 www.quattroarchitects.com

DRAWING NO 5025/F/12 REV B